

LSP automatically converts the existing Windows server to Linux! Using Linux without learning Linux!

LSP.....

**NO MORE
MICROSOFT**

**Automatically Convert existing
Windows Server to Linux**



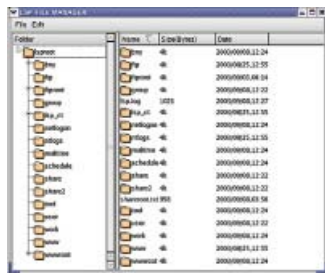
das technology

<http://www.das.com.tw>

Email: sales@das.com.tw

LSP automatically converts the existing Windows server to Linux! Using Linux without learning Linux!

- As everyone knows, Linux becomes a real threat to Microsoft's Windows server. Everyone knows that Linux is very stable, compared to Microsoft. However, Linux is difficult to use due to an entirely different administration GUI, and even no GUI for many things.
- ★ **Easy User interface for Small Business and no Linux experience required!**
Thus, there are so many small business out there, which already have Windows servers, they do want a much better OS like Linux. However, they even don't know how to manage a Linux server! LSP Provides a GUI similar to that on Windows! Even a secretary can start using Linux within 30 minutes with LSP!
- ★ **Saving thousand hours for even Linux experts in large corporate environment!**
Large corporates have thousands of passwords/ users/ groups, shared directories with file sharing permission, web directories, FTP directories, domain name,....
- ★ **Manual migration from Windows to Linux is in terms of thousand hours! There can all be done in just minutes with LSP!**



LSP can help a user to migrate from Windows to Linux automatically, it can perform following things:

- ★ **1. File Sharing**
LSP will automatically transfer all shared files Windows server to Linux server directly. And all permission property still preserved. LSP also provides a File Manager which looks like that on Microsoft.
- ★ **2. Users, Groups and Passwords**
LSP will automatically transfer all users/ passwords/ groups to Linux. And it will also rebuild relationship between group and users! Windows clients can login to same domain without changing domain name, password, username....
- ★ **3. Mail Server**
LSP will establish a mail server automatically, and provide users with a GUI similar to Microsoft Exchange server, and even easier than Exchange! (Based on Sendmail, and Postfix for Mandrake, qmail upon request).
- ★ **4. Web/FTP Server**
LSP will establish a Web Server (based on Apache server), and a FTP server (Wu-FTP or Pro-FTP). And configure this web server according to original Windows configurations. Including mapping between virtual directory and real directory.
- ★ **5. DHCP Server**
- ★ **6. Remote Control**
You can control Linux server with our GUI from a remote Linux Machine through internet!
- ★ **7. Printer Server**
You can set up a printer server easily without worrying about printer drivers!
Removing stocked printing jobs are just a few clicks away!
- ★ **8. Service Manager**
Starting /stopping mail/ FTP/ Telnet/ File sharing/ Web server by one click!
- ★ **9. Backup/Restore**
You can choose to restore system configuration by time and item!
- ★ **10. File Sharing Summary**

Quickly overview all shared directories for all users or any user!

*Required platform: Latest Redhat, Turbolinux, Mandrake and Suse. (Mac OS X available upon request).

Microsoft NT 4.0, Windows 2000, or Windows 2003

*U.S. Patent Pending, Taiwan Patent protected.

*Windows, NT, Microsoft are the trademarks of the Microsoft.



Copyright © 2003 das technology co., ltd. All rights reserved.

<http://www.das.com.tw>

E-mail: sales@das.com.tw